

DEPARTMENT OF THE ARMY TECHNICAL MANUAL

**ORGANIZATIONAL MAINTENANCE REPAIR PARTS
AND SPECIAL TOOLS LISTS
PROJECTOR, STILL PICTURE AP-6(1)
FSN 6730-597-8517**

Headquarters, Department of the Army, Washington, B.C.
28 June 1974

Current as of October 1973

	Paragraph	Page
SECTION I. INTRODUCTION		
Scope	1-1	2
General	1-2	2
Explanation of columns	1-3	2
Special information	1-4	4
Location of repair parts	1-5	4
Abbreviations (Not applicable)	1-6	4
Reporting of equipment publication improvements	1-7	4
II. PRESCRIBED LOAD ALLOWANCE (Not applicable)		
III. REPAIR PARTS; LIST		6
IV. SPECIAL TOOLS, TEST AND SUPPORT EQUIPMENT (Not applicable)		
V. INDEX - FEDERAL STOCK NUMBER AND REFERENCE NUMBER CROSS- REFERENCE TO FIGURE AND ITEM NUMBER		

SECTION I INTRODUCTION

1-1. Scope

This manual lists repair parts and special tools required for the performance of organizational maintenance of the AP-6(1). The PCCN for the AP-6(1) is GRNACH for all models.

1-2. General

This repair parts and special tools list is divided into the following sections:

a. Prescribed Load Allowance (PLA) - Section II. Not applicable.

b. Repair Parts List - Section III. A list of repair parts authorized for the performance of maintenance at the organizational level. This repair parts list is arranged in alphabetical order.

c. Special Tools, Test and Support Equipment - Section IV. Not applicable.

d. Index - Federal Stock Number and Reference Number Cross-Reference to Figure and Illustration Number - Section V. A list, in ascending numerical sequence, of all Federal stock numbers appearing in the listings, followed by a list, in alphabetic sequence, of all reference numbers appearing in the listings. Federal stock number and reference numbers are cross-referenced to each illustration figure and item number or reference designation appearance.

1-3. Explanation of Columns

The following provides an explanation of columns in the tabular lists —

a. Source, Maintenance, and Recoverability Codes (SMR).

(1) *Source code.* Indicates the manner of acquiring support items for maintenance, repair, or overhaul of end items. Source codes are —

<i>Code</i>	<i>Explanation</i>
PA —	Item procured and stocked for anticipated or known usage.
PB —	Item procured and stocked for insurance purposes because essentiality dictates that a minimum quantity be available in the supply systems.
PC —	Item procured and stocked and which otherwise would be coded PA except that it is deteriorative in nature.
PD —	Support item, excluding support equipment, procured for initial issue or outfitting and stocked only for subsequent or additional
PE —	Support equipment procured and stocked for initial issue or outfitting to specified maintenance repair activities.
PF —	Support equipment which will not be stocked but which will be centrally procured on demand.
PG —	Item procured and stocked to provide for sustained support for the life of the equipment. It is applied to an item peculiar to the equipment which because of probable discontinuance or shutdown of production facilities would prove uneconomical to reproduce at a later time.
KD —	An item of depot overhaul repair kit and not purchased separately. Depot kit defined as a kit that provides items required at the time of overhaul or repair.
KF —	An item of a maintenance kit and not purchased separately. Maintenance kit defined as a kit that provides an item that can be replaced at organizational or direct support or general support levels of maintenance.
KB —	Item included in both a depot overhaul repair kit and a maintenance kit.
MO —	Item to be manufactured or fabricated at organizational level.
MF —	Item to be manufactured or fabricated at direct support maintenance level.
MH —	Item to be manufactured or fabricated at general support maintenance level.
MD —	Item to be manufactured or fabricated at depot maintenance level.
AO —	Item to be assembled at organizational level.
AF —	Item to be assembled at direct support maintenance level.
AH —	Item to be assembled at general support maintenance level.
AD —	Item to be assembled at depot maintenance level.
XA —	Item is not procured or stocked because the requirements for the item will result in the replacement of the next higher assembly.
XB —	Item is not procured or stocked. If not available through salvage, requisition.
XC —	Installation drawing, diagram instruction sheet, field service drawing, that is identical

Code *Explanation*
 X D — Support items can be requisitioned with justification.

NOTE

Cannibalization or salvage may be used as a source of supply for any items source coded above except those coded X.4 and aircraft support items as restricted by AR 700-42.

(2) *Maintenance code.* Maintenance codes are assigned to indicate the levels of maintenance authorized to USE and REPAIR support items. The maintenance codes are entered in the third and fourth positions of the Uniform SMR Code Format as follows -

(a) Use (third position). The maintenance code entered in the third position indicates the lowest maintenance level authorized to remove, replace, and use the support item. The maintenance code entered in the third position indicates one of the following levels of maintenance.

Code *Application/Explanation*
 O - Support item is removed, replaced, used at the organizational level of maintenance.

NOTE

A code "C" may be used in this position to denote crew or operator maintenance performed within organizational maintenance.

- F - Support item is removed, replaced, used at the direct support maintenance level.
- H - Support item is removed, replaced, used at the general support maintenance.
- D - Support items that are removed, replaced, used at depot only.

(b) *Rqair (fourth position).* The maintenance code entered in the fourth position indicates whether the item is to be repaired and identifies the lowest maintenance level with the capability to perform complete repair (i.e., all authorized maintenance functions). When a maintenance code is not used a dash (-) sign is entered. For multi-service equipment/systems or when a code is entered, this position will contain one of the following maintenance codes as assigned by the service(s) that require the code -

- Code* *Application/Explanation*
 o - The lowest maintenance level capable of complete repair of the support item is the organizational level.
- F - The lowest maintenance level capable of complete repair of the support item is direct support.

- Code* *Application/Explanation*
 H - The lowest maintenance level capable of complete repair of the support item is general support.
- D - The lowest maintenance level capable of complete repair of the support item is the depot level.
- L - Repair restricted to designated Specialized Repair Activity.
- Z - Non-repairable. No repair is authorized.
- B - No repair is authorized. The item may be reconditioned by adjusting, lubricating, etc., at the user level. No parts or special tools are procured for the maintenance of this item.

(3) *Recoverability code.* Recoverability codes are assigned to support items to indicate the disposition action on unserviceable items. The recoverability code is entered in the fifth position of the uniform SMR Code Format as follows -

- Code* *Explanation*
 Z - Nonrepairable item. When unserviceable, condemn and dispose at the level indicated in the first digit of the maintenance code.
- O - Repairable item. When uneconomically repairable, condemn and dispose at organizational level.
- F - Repairable item. When uneconomically repairable, condemn and dispose at the direct support level.
- H - Repairable item. When uneconomically repairable, condemn and dispose at the general support level.
- D - Repairable item. When beyond lower level repair capability, return to depot. Condemnation and disposal not authorized below depot level.
- L - Repairable item. Repair, condemnation, and disposal not authorized below depot/Specialized Repair Activity level.
- A - Item requires special handling or condemnation procedures because of specific reasons (i.e., precious metal content, high dollar value, critical material or hazardous material).

b. Federal Stock Number. Indicates the Federal stock number assigned to the item and will be used for requisitioning purposes.

c. Description Indicates the Federal item name and a minimum description required to identify the item. The last line indicates the reference number followed by the applicable Federal Supply Code for

Manufacturer (FSCM) in parentheses. The FSCM is used as an element in item identification to designate manufacturer or distributor or Government agency, etc., and is identified in SB 708-42.

d. Unit of Measure (U/M). Indicates the standard or basic quantity by which the listed item is used in performing the actual maintenance function. This measure is expressed by a two-character alphabetical abbreviation; e.g., ea, in, pr, etc., and is the basis used to indicate quantities and allowances in subsequent columns. When the unit of measure differs from the unit of issue, the lowest unit of issue that will satisfy the required units of measure will be requisitioned.

e. Quantity Incorporated in Unit. This column indicates the quantity of the item used in the equipment. Subsequent appearances of the same item in the same assembly are indicated by the letters "REF".

f. 15-Day Organizational Maintenance Allowance.

(1) The repair parts indicated by an asterisk in the allowance column represent those authorized for use at the organizational category, and will be requisitioned on an "as required" basis, until stockage is based on demand in accordance with AR 710-2.

(2) Major Army commanders are authorized to approve reduction in the range of support items authorized for use in units within their commands. Recommendations for increase in range of items authorized for use will be forwarded to Commander, US Army Electronics Command, ATTN: AMSEL-MA-SNV, Fort Monmouth, N.J., 07703. Any changes approved will be reflected in a revision to the RPSTL.

(3) Allowance quantities are indicated in the special tools list section for special tools, TMDE, and other equipment.

g. Illustration. This column is divided as follows:

(1) Figure number. Indicates the figure number of the illustration on which the item is shown in TM 11-233A2.

(2) Item number. Indicates the item number or reference designation used to reference the item in the illustration.

1-4. Special Information

a. Usable on codes are included in column 3. Uncoded items are applicable to all models. Identification of the usable on codes used in this publication are --

Code	Used on
A0L	AP-6(1)

b. The following publication pertains to the AP-6(1) and its components:

TM 11-2332A Still Picture Projector
AP-6(1).

1-5. Location of Repair Parts

a. This manual contains one cross-reference Index (sec V) to be used to locate a repair part when either the Federal stock number or reference number (manufacturer's part number) is known. The first column in the index is prepared in numerical or alphanumeric sequence in ascending order. The reference numbers (manufacturer's part numbers) are listed immediately following the last listed Federal stock number in the index of Federal stock numbers.

b. When the Federal stock number or reference number is known, follow the procedures given in (1) and (2) below.

(1) Refer to the index of Federal stock numbers (sec V) and locate the Federal stock number or reference number. The FSN and reference number are cross-referenced to the applicable figure and item number or reference designation.

(2) Refer to the repair parts list (sec III) and locate the figure number (col 7a) and item number or reference designation (col 7b) as noted in the FSN index.

c. When the figure and item number or reference designation are known, scrutinize columns 7a and 7b of the repair parts list (sec III) until the item is located.

d. When the FSN, reference number, figure number, item number and reference designation are not known, scrutinize column 3 of the repair parts list (sec III), which is arranged in alphabetical order.

1 - 6 . A b b r e v i a t i o n s

Not applicable.

1-7. Reporting of Equipment Publication

Improvements

The reporting of errors, omissions, and recommendations for improving this publication by the individual user is encouraged. Reports should be submitted on DA Form 2028 (Recommended Changes to Publications and Blank Forms) and forwarded direct to Commander, US Army Electronics Command, ATTN: AMSEL-MA-SNV, Fort Monmouth, N.J., 07703.

(Next printed page is 6)

SECTION III

TM11-6730-206-20P

AR CODE	FEDERAL STOCK NUMBER	DESCRIPTION REFERENCE NUMBER & MFR CODE	USABLE ON CODE	(4) UNIT OF MEAS	(5) QTY INC IN UNIT	(6) 15-DAY ORGANIZATIONAL MAINTENANCE ALW				(7) ILLUSTRATIC	
						(a)	(b)	(c)	(d)	(a)	(b)
						1-5	6-20	21-50	51-100	FIGURE NO	(E) NO
022	6730-312-8105	ADAPTER, STILL PICTURE MPI ADAPTS PROJ FOR.... KOLL FILM 222-0111 (82394)		EA	1	*	*	*	*		MP1
022	8730-312-8106	APERITURE, GLASS ASSEMBLY A101..... 222-0117 (82394)		EA	2	*	*	*	*	24	A101
022	8730-312-8106	APERITURE, GLASS ASSEMBLY A102..... 222-0117 (82394)		EA	REF	*	*	*	*	24	A102
022	3110-151-9128	BALL, BEARING MPI01..... VST0001 (82394)		EA	3	*	*	*	*	24	
022	3110-151-9128	BALL, BEARING MPI02..... VST0001 (82394)		EA	REF	*	*	*	*		
022	3110-151-9128	BALL, BEARING MPI03..... VST0001 (82394)		EA	REF	*	*	*	*		
022	6730-312-8109	BLADE ASSEMBLY, FAN MF4..... 222-1024 (82394)		FA	1	*	*	*	*	23	MF4
022	5305-527-5251	BOLT, TAKE-UP SPOOL MOUNTING M102..... 222-1102 (82394)		EA	1	*	*	*	*	24	M102
022	5340-266-0755	BUMPER, RUBBER A9..... VST0060 (82394)		EA	4	*	*	*	*		A9
022	5340-266-0755	BUMPER, RUBBER A10..... VST0060 (82394)		FA	REF	*	*	*	*		A10
022	5340-266-0755	BUMPER, RUBBER A11..... VST0060 (82394)		EA	REF	*	*	*	*	18	A11
022	5340-266-0755	BUMPER, RUBBER A12..... VST0060 (82394)		FA	REF	*	*	*	*	18	A12
022	6145-284-0063	CABLE, POWER, ELECTRICAL W2..... S (88193)		FT	10	*	*	*	*	13	W2
022	5935-149-4013	CONNECTOR, PLUG, ELECTRICAL P1..... 7057 (74545)		EA	1	*	*	*	*	13	P1
022	6730-318-6706	FILTER ASSEMBLY, FEAT A20..... 222-0105 (82394)		EA	1	*	*	*	*	17	A20
022	5975-319-0661	INSULATOR, BUSHING E1..... SR7 (28520)		EA	1	*	*	*	*	13	E1
022	5355-667-6034	KNOB MPI4..... VST0056 (82394)		EA	1	*	*	*	*	17	MP14
022	6730-3212-8114	KNOB, ACCESSORY LOCKING H31..... 222-1079 (82394)		EA	1	*	*	*	*	17	H31
022	6730-312-8115	KNOB, FILM ADVANCE MP106..... VST0087 (82394)		EA	1	*	*	*	*	24	
022	6730-312-6116	KNOB, TURNER LOCKING H32..... 222-1039 (82394)		EA	1	*	*	*	*	17	H32
022	6240-143-3043	LAMP, PROJECTION DS1..... 1MT12P115 (24446)		EA	1	*	*	*	*	22	DS1
022	6250-319-0839	LAMPHOLDER X2..... 3742G (71183)		EA	1	*	*	*	*		X2
022	6760-312-8118	LENS, CONDENSER, PHOTOGRAPHIC A29..... 222-0104 (82394)		EA	1	*	*	*	*	17	A29
022	6760-597-1540	LENS, CONDENSER, PHOTOGRAPHIC A30..... 222-0110 (82394)		EA	1	*	*	*	*	17	A30
022	6760-319-0840	LENS, PROJECTION, VIEWING DS2..... VST6012 (82394)		EA	1	*	*	*	*		DS2
022	6105-692-6395	MOTOR, ALTERNATING CURRENT B2..... 222-1018 (82394)		FA	1	*	*	*	*	23	B2
022	5315-200-8374	PIN, STRAIGHT, HEADED H8..... VST0083 (82394)		FA	1	*	*	*	*	19	H8
022	6730-312-8121	REFLECTOR-MOUNTING ASSEMBLY A41..... 222-0100 (82394)		EA	1	*	*	*	*	22	A41
022	5340-282-0775	RING, RETAINING H12..... 5133-16M (79136)		EA	1	*	*	*	*	20	H12
022	5340-200-5214	RING, RETAINING H18..... 5133-25SMD (79136)		EA	2	*	*	*	*	18	H18
022	5340-200-5214	RING, RETAINING H19..... 5133-25SMD (79136)		EA	REF	*	*	*	*	18	H19
022	6730-312-8123	SCREW, ELEVATING H29..... 222-1019 (82394)		EA	2	*	*	*	*	18	H29
022	6730-312-8123	SCREW, ELEVATING H30..... 222-1019 (82394)		EA	REF	*	*	*	*	18	H30
022	5305-638-5194	SCREW, EXTERNALLY RELIEVED BODY H23..... 222-1040 (82394)		EA	1	*	*	*	*		H23
022	5305-206-7526	SCREW, EXTERNALLY RELIEVED BODY H20..... 222-1080 (82394)		EA	3	*	*	*	*	17	H20
022	5305-206-7526	SCREW, EXTERNALLY RELIEVED BODY H21..... 222-1080 (82394)		EA	REF	*	*	*	*	17	H21
022	5305-206-7526	SCREW, EXTERNALLY RELIEVED BODY H22..... 222-1080 (82394)		EA	REF	*	*	*	*	17	H22
022	6730-845-9016	SCREW, SINGLE FRAME DETENT M103..... VST0143 (82394)		EA	1	*	*	*	*	24	M103
022	6730-312-8124	SLIDE CARRIER ASSEMBLY MP2..... 222-1012 (82394)		FA	1	*	*	*	*		MP2

SECTION III

TM11-6730-206-20P

(1) SMR CODE	(2) FEDERAL STOCK NUMBER	(3) DESCRIPTION		(4) UNIT OF MEAS	(5) QTY INC IN UNIT	(6) 15-DAY ORGANIZATIONAL MAINTENANCE ALW				(7) ILLUSTRATION	
						(a)	(b)	(c)	(d)	(a) FIGURE NO	(b) SITE NO
						1-5	6-20	21-50	51-100		
PAJZZ	6730-312-8128	SPL. FILM TAKE-UP	MP111.....	EA	1	*	*	*	*		24
PAJZZ	6730-312-8130	VST0039 (82394)	SPRING, DETENT	MP27.....	EA	1	*	*	*		19
PAJZZ	5360-597-3830	VST0042 (82394)	SPRING, HELICAL, COMPRESSION	MP25.....	EA	1	*	*	*		17
PAJZZ	5340-312-8129	22-1J31 (82394)	SPRING, HELICAL, COMPRESSION	MP112.....	EA	2	*	*	*		24
PAJZZ	5340-312-8129	VST0040 (82394)	SPRING, HELICAL, COMPRESSION	MP113.....	EA	REF	*	*	*		24
PAJZZ	5380-598-4973	VST0044 (82394)	SPRING, HELICAL, EXTENSION	MP115.....	EA	1	*	*	*		
PAJZZ	6730-598-4466	VST0065 (82394)	SPRING, HELICAL, TORSION	MP26.....	EA	1	*	*	*		20
PAJZZ	5930-050-2696	SWITCH, TOGGLE	S1.....	EA	2	*	*	*	*		13
PAJZZ	5930-050-2696	SWITCH, TOGGLE	S2.....	EA	REF	*	*	*	*		13

INDEX - FEDERAL STOCK NUMBER AND REFERENCE NUMBER
CROSS-REFERENCE TO FIGURE AND ITEM NUMBER

STOCK NUMBER	FIGURE NO.	ITEM NO.	STOCK NUMBER	FIGURE NO.	ITEM NO.
3110-151-9128			6105-692-6395	23	B2
3110-151-9128	24		6645-284-0063	13	W2
5305-206-7526	17	H20	6240-143-3043	22	DS1
5305-206-7526	17	H21	6250-319-0839		X2
5305-206-7526	17	H22	6730-312-8105		MP1
5305-527-5251	24	H102	6730-312-8106	24	A101
5305-638-5194		H23	6730-312-8106	24	A102
5315-200-8374	19	H8	6730-312-8109	23	MP4
5340-200-5214	18	H18	6730-312-8114	17	H31
5340-200-5214	18	H19	6730-312-8115	24	
5340-266-0755		A10	6730-312-8116	17	H32
5340-266-0755		A9	6730-312-8121	22	A4i
5340-266-0755	18	A11	6730-312-8123	18	H29
5340-266-0755	18	A12	6730-312-8123	18	H30
5340-282-0755	20	H12	6730-312-8124		MP2
5340-312-8129	24		6730-312-8128	24	
5355-667-6034	17	MP14	6730-312-8130	19	MP27
5360-597-3830	17	MP25	6730-318-6706	17	A20
5360-598-4973			6730-598-4466	20	MP26
5930-050-2696	13	S1	6730-845-9016	24	H103
5930-050-2696	13	S2	6760-312-8118	17	A29
5935-149-4013	13	P1	676-319-0840		DS2
5975-319-0661	13	E1	6760-597-1540	17	A30

REFERENCE NO.	MFR CODE	FIG. NO.	ITEM NO.	REFERENCE NO.	MFR CODE	FIG. NO.	ITEM NO.
S	88193	13	M2	222-0105	82394	17	A20
SR7	28520	13	E1	222-0111	82394		MP1
ST5JK	81350	13	S1	222-0110	82394	17	A30
ST5JK	81350	13	S2	222-0117	82394	24	A101
VST00J1	82394			222-0117	82394	24	A102
VST00J1	82394	24		222-1012	82394		MP2
VST00J3	82394	24		222-1018	82394	23	B2
VST0040	82394	24		222-1019	82394	18	H29
VST0042	82394	19	MP27	222-1019	82394	18	H30
VST0044	82394			222-1024	82394	23	MP4
VST0050	82394	17	MP14	222-1031	82394	17	MP25
VST0060	82394		A9	222-1039	82394	17	H32
VST0060	82394		A10	222-1040	82394		H23
VST0060	82394	18	A11	222-1079	82394	17	H31
VST0060	82394	18	A12	222-1080	82394	17	H20
VST0060	82394	20	MP26	222-1080	82394	17	H21
VST0083	82394	19	H8	222-1080	82394	17	H22
VST0067	82394	24		222-1102	82394	24	M102
VST0143	82394	24	M103	3742G	71183		X2
VST0012	82394		DS2	5133-18M0	79136	20	H12
IMT12P115	24446	22	DS1	5133-25SMD	79136	18	H18
222-0100	82394	22	A41	5133-25SMD	79136	18	H19
222-0104	82394	17	A29	7057	74545	13	P1

By Order of the Secretary of the Army:

CREIGHTON W. ABRAMS
General, United States Army
Chief of Staff

Official:

VERNE L. BOWERS
Major General, United States Army
The Adjutant General

Distribution:

Active Army:

USASA (2)	USAINTC3 (3)
CNGB (1)	WRAMC (1)
ACSC-E (2)	ATS (1)
Dir of Trans (1)	Fort Gordon (10)
COE (1)	Fort Huachuca (10)
TSG (1)	WSMR (1)
USAARENBD (1)	Fort Carson (5)
USAMB (10)	Ft Richardson (ECOM Ofc) (2)
AMC (1)	Army Dep (1) except
TRADOC (1)	LBAD (14)
ARADCOM (2)	SAAD (30)
ARADCOM Rgn (2)	TOAD (14)
OS Maj Comd (4)	ATAD (10)
LOGCOMD (3)	USA Dep (2)
MICOM (2)	Sig Sec USA Dep (2)
TECOM (2)	Sig Dep (2)
AV Comm Cen (1)	Sig FLDMS (1)
USACC (4)	USAERDAA (1)
MDW (1)	USAERDAW (1)
Armies (2)	MAAG (1)
Corps (2)	USARMIS (1)
HISA Ft Monmouth (18)	Units org under fol TOE:
Svc Colleges (1)	(1 copy each)
USASCS (20)	11-96
USASESS (5)	11-117
USAADS (2)	11-127
USAFAS (2)	11-500(AA-AC)
USAARMS (2)	29-134
USAIS (2)	29-136
USAES (2)	

NG: None

USAR: None

For explanation of abbreviations used, see AR 310-50.

END

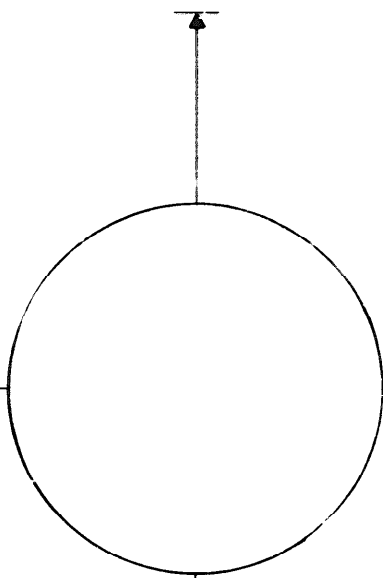
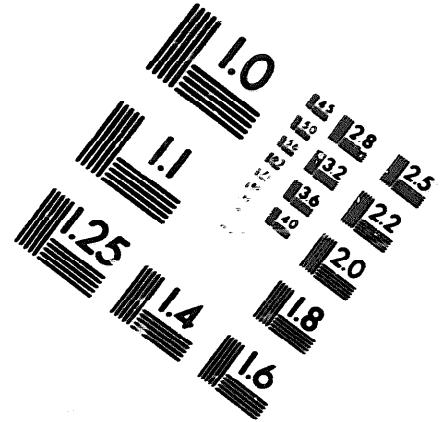
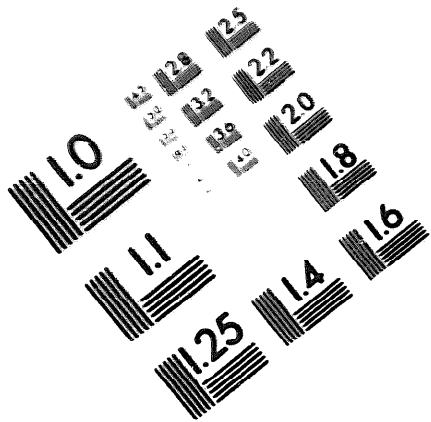
8-1-83

DATE





DEPARTMENT OF THE ARMY
MICROFORM
TEST TARGET



150 MM

1.0 mm (e= 0.1 mm)
ABCDEFGHIJKLMN OPQRST UVWXYZ 1234567890
abcdefghijklmnopqrstuvwxyz \$%&'()*+,-./:;<=>@

1.0 mm (e= 0.1 mm)
ABCDEFGHIJKLMN OPQRST UVWXYZ 1234567890
abcdefghijklmnopqrstuvwxyz \$%&'()*+,-./:;<=>@

1.5 mm (e= 1.09 mm)
ABCDEFGHIJKLMN OPQRST UVWXYZ 1234567890
abcdefghijklmnopqrstuvwxyz \$%&'()*+,-./:;<=>@

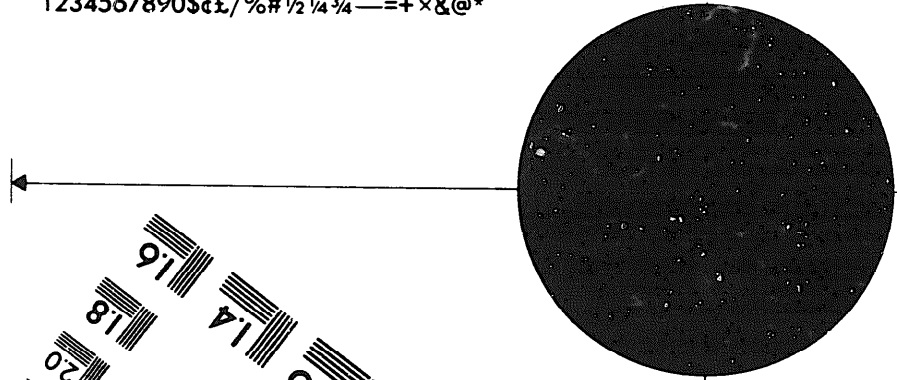
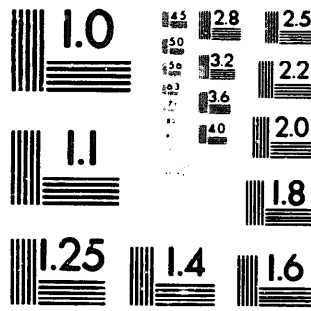
1.5 mm (e= 1.09 mm)
ABCDEFGHIJKLMN OPQRST UVWXYZ 1234567890
abcdefghijklmnopqrstuvwxyz \$%&'()*+,-./:;<=>@

2.0 mm (e= 1.37 mm)
ABCDEFGHIJKLMN OPQRST UVWXYZ
abcdefghijklmnopqrstuvwxyz
1234567890 \$%&'()*+,-./:;<=>@

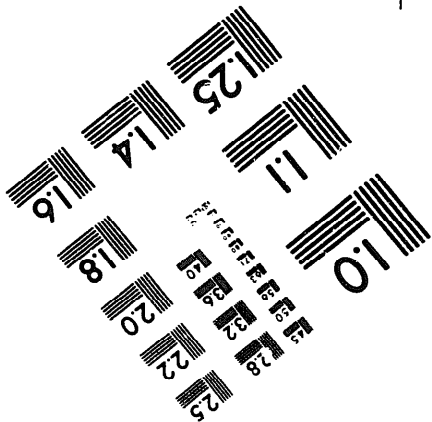
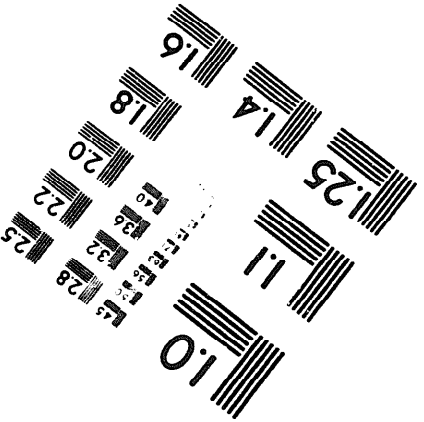
2.0 mm (e= 1.37 mm)
ABCDEFGHIJKLMN OPQRST UVWXYZ
abcdefghijklmnopqrstuvwxyz
1234567890 \$%&'()*+,-./:;<=>@

2.5 mm (e= 1.77 mm)
ABCDEFGHIJKLMN OPQRST UVWXYZ
abcdefghijklmnopqrstuvwxyz
1234567890 \$%&'()*+,-./:;<=>@

2.5 mm (e= 1.77 mm)
ABCDEFGHIJKLMN OPQRST UVWXYZ
abcdefghijklmnopqrstuvwxyz
1234567890 \$%&'()*+,-./:;<=>@



200 MM



250 MM